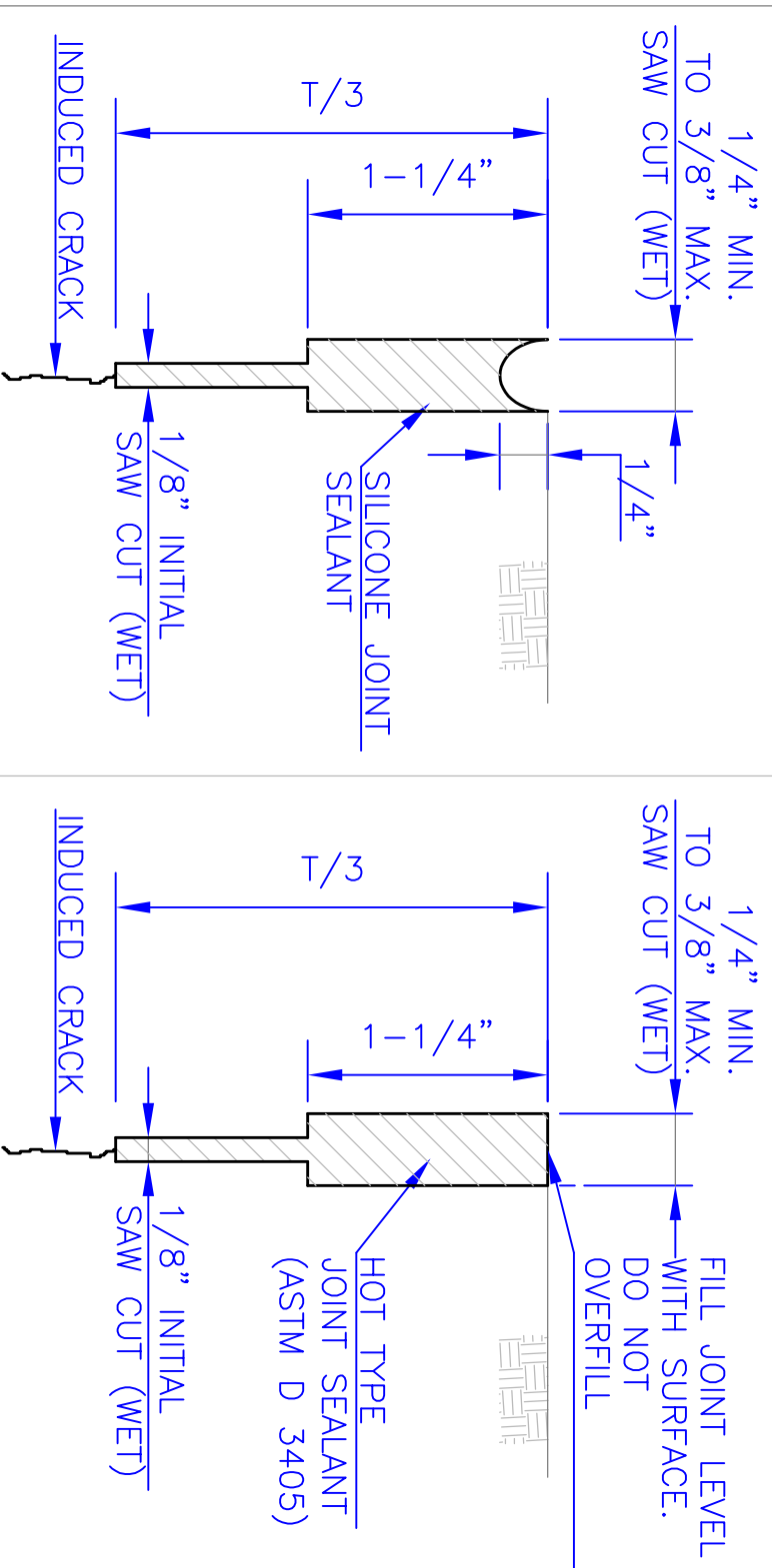


DETAIL A

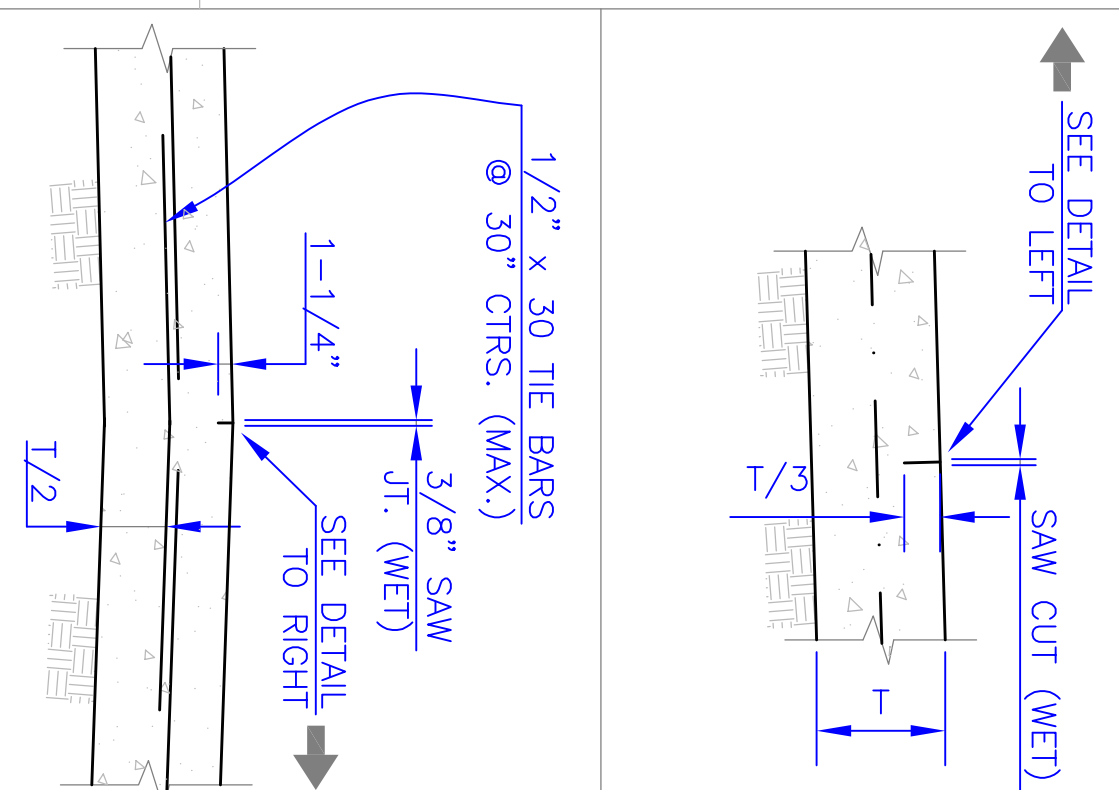
6" INTEGRAL CURB
 ϕ 1-1/2" FOR DRIVE ENTRANCES
 AND 3/4" FOR SIDEWALK RAMPS.



**SILICONE JOINT
 OPTION 1**

**HOT TYPE JOINT
 OPTION 2**

TRANSVERSE AND LONGITUDINAL CONTRACTION JOINTS

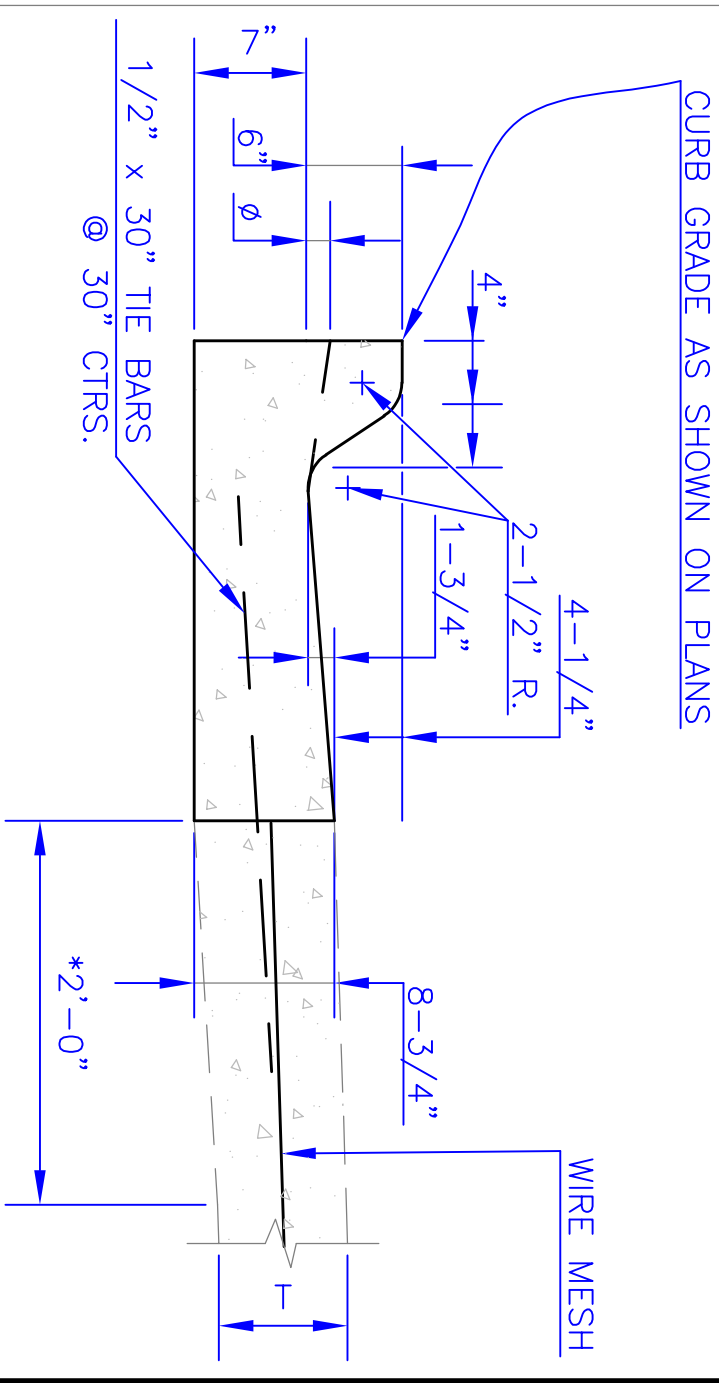


**SILICONE JOINT
 OPTION 1**

**HOT TYPE JOINT
 OPTION 2**

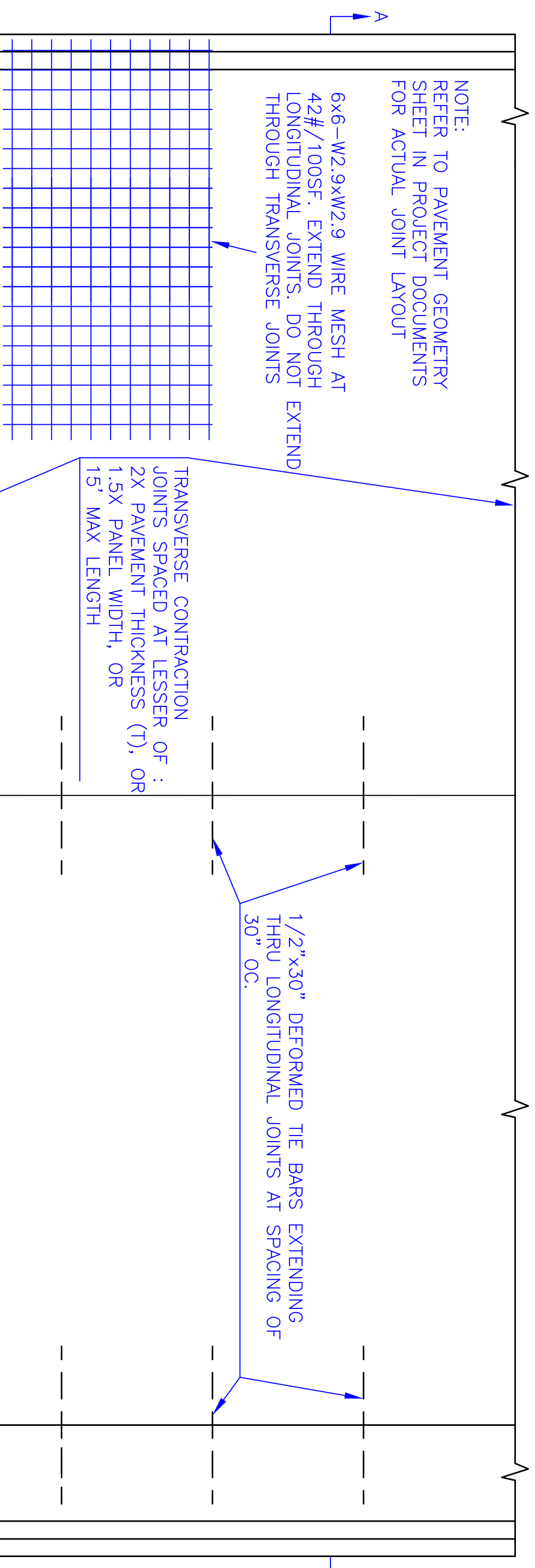
TRANSVERSE AND LONGITUDINAL BUTT JOINTS

NOTE:
 AT THE BEGINNING AND END OF THE PAVEMENT ON ANY GIVEN PROJECT A CONSTRUCTION JOINT AS OUTLINED IN THE STANDARD SPECIFICATIONS AND SHOWN ABOVE SHALL BE USED UNLESS THE PAVEMENT ABUTS A RIGID SURFACE. THE HEADER SHALL BE REMOVED AND THE TIE BARS BENT INTO THE GROOVE AT RIGHT ANGLES TO THE CENTERLINE OF THE PAVEMENT.



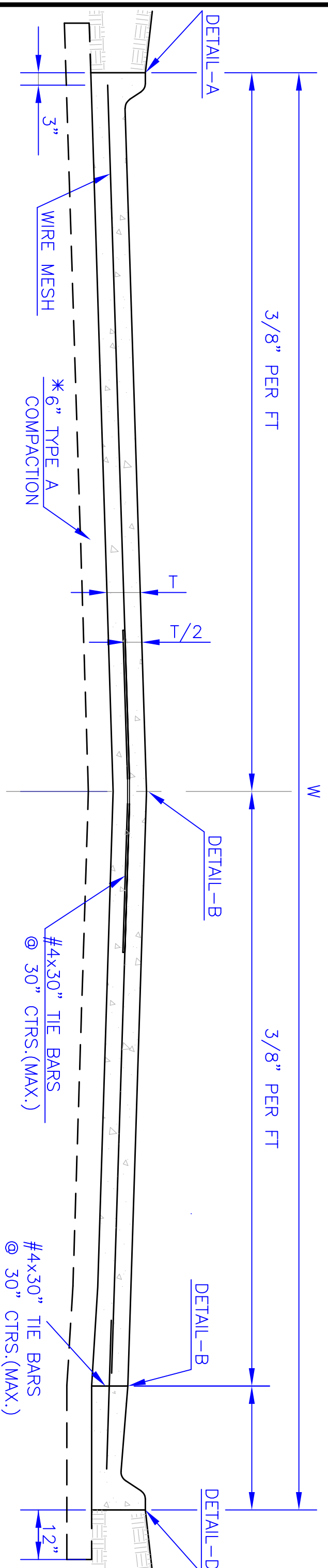
DETAIL D

* THE CONTRACTOR HAS THE OPTION OF MAINTAINING T OR TRANSDUCTION AS SHOWN AT NO ADDITIONAL COST TO OWNER.
 ϕ 1-1/2" FOR DRIVE ENTRANCES AND 3/4" FOR SIDEWALK RAMPS.



PLAN VIEW

NOTE: STANDARD LANE WIDTH = 11'-0"

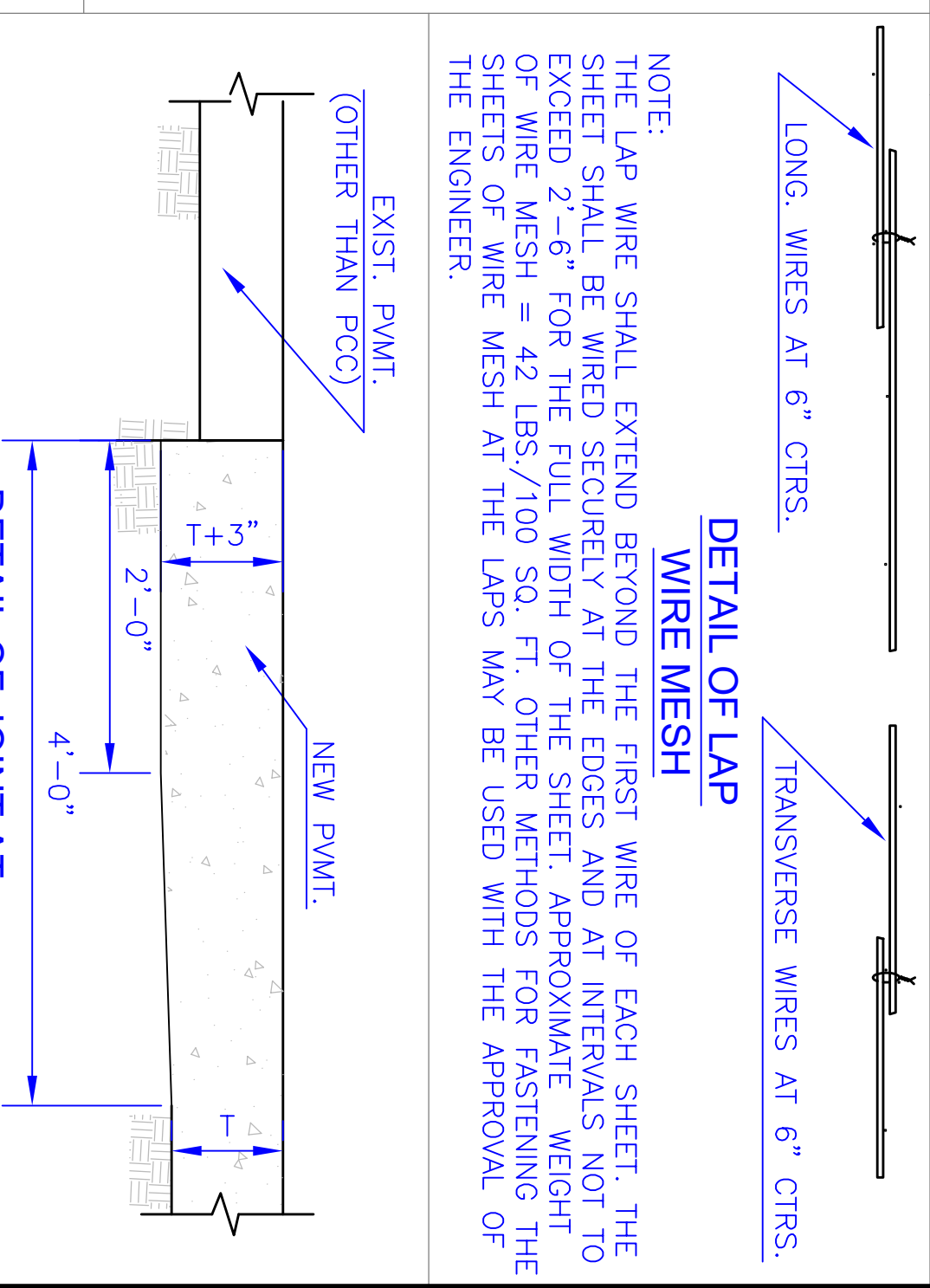


**TYPICAL PAVEMENT
 SECTION A-A**

* SUBGRADE TREATMENT PER GEOTECHNICAL REPORT. IF NO GEOTECH REPORT, COMPACT TO TYPE A REQUIREMENTS, 6" MIN
 NOTE: COMBINED CURB AND GUTTER OR INTEGRAL CURB MAY BE USED WITH CONCRETE PAVEMENT CONSTRUCTION AS DETERMINED BY THE CITY/COUNTY ENGINEER. SEE TYPICAL PAVEMENT SECTION ABOVE.

NOTE:
 THE LAP WIRE SHALL EXTEND BEYOND THE FIRST WIRE OF EACH SHEET. THE SHEET SHALL BE WIRED SECURELY AT THE EDGES AND AT INTERVALS NOT TO EXCEED 2'-6" FOR THE FULL WIDTH OF THE SHEET. APPROXIMATE WEIGHT OF WIRE MESH = 42 LBS./100 SQ. FT. OTHER METHODS FOR FASTENING THE SHEETS OF WIRE MESH AT THE LAPS MAY BE USED WITH THE APPROVAL OF THE ENGINEER.

**DETAIL OF LAP
 WIRE MESH**

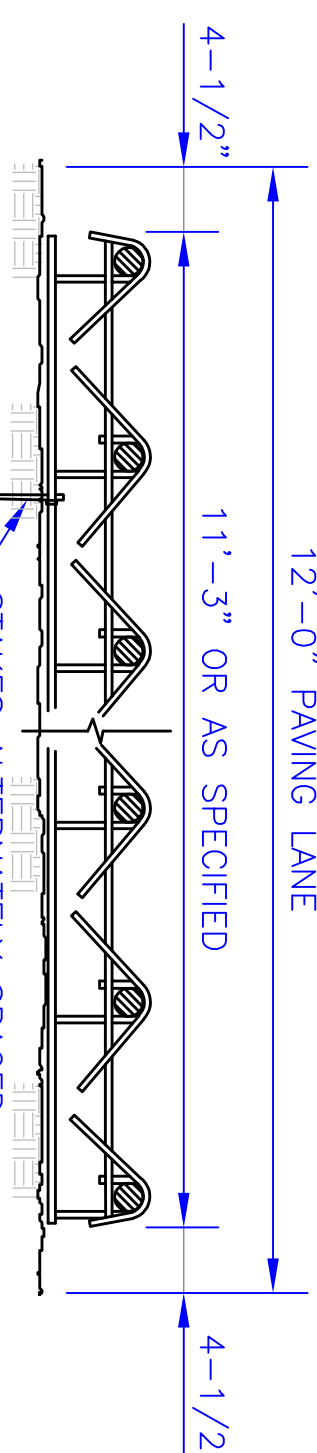


**DETAIL OF JOINT AT
 EXISTING PAVEMENT**

NOTES:
 1. SAND IS NOT AN APPROVED FILL OR SUBGRADE MATERIAL.
 2. WHERE NEW PAVEMENT ABUTS EXISTING PCC PAVEMENT, CONSULT THE ENGINEER. IF ABUTTING TO INTERSECTION USE THICKENED EDGE. ABUTTING UNSOUND CONCRETE USE THICKENED EDGE. SOUND MAINLINE CONCRETE WILL USE 1" DOWELS SPACED 12" OC, 1/2" PREFORMED JOINT FILLER AND SILICONE SEALANT.

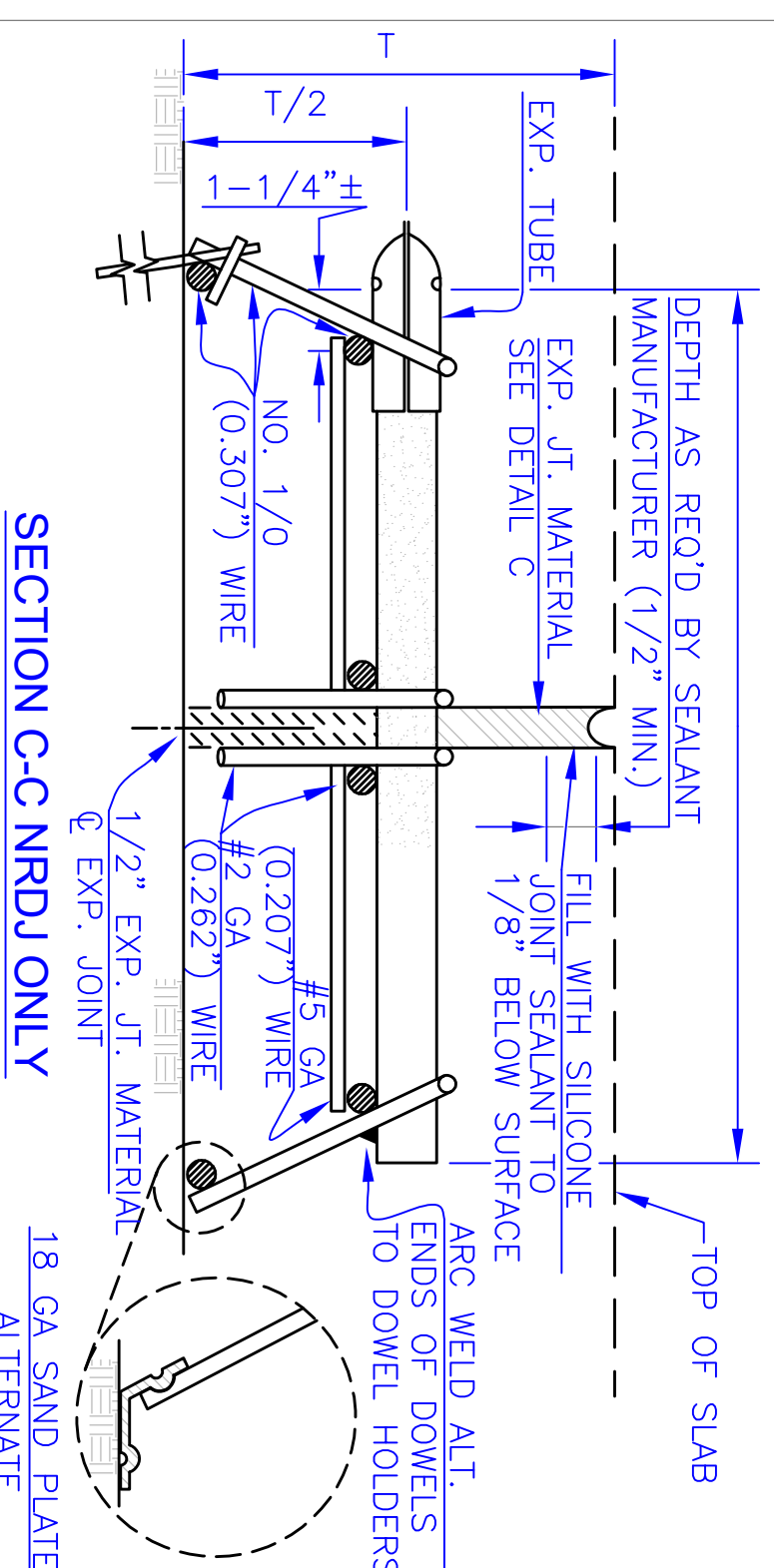
SECTION B-B-NRDJ ONLY

DOWEL ONLY IF NRDJ CALLED OUT IN CONTRACT DOCUMENTS
 1" x 18" DOWEL: 7" TO 8" PAVING
 1-1/4" x 18" DOWEL: 9" - 12" PAVING



**PLAN VIEW OF WELDED
 EXPANSION JOINT
 ASSEMBLY-NRDJ ONLY**

NOTES:
 1. DOWELS, PLAIN ROUND PER A.S.T.M. A-615, GRADE 40 OR AS SPECIFIED.
 2. UNIT-WIRED TOGETHER FOR QUICK DISASSEMBLE AND PLACEMENT OF EXPANSION AND FILLER IN FIELD.
 3. ALL WIRE SIZES SHOWN ARE MINIMUM. DOWELS, PLAIN ROUND PER A.S.T.M. A-615, GRADE



SECTION C-C-NRDJ ONLY

NO.	DATE:	REVISION	BY:	APP'D.
MAR 2026		REVISED THE BARS, CURB WITH, WIRE MESH	CNB	
JULY 2025		Added minimum pavement thicknesses	JAH MS	

DRAWN BY: CNB
 APP'D BY:

DATE: _____
 SHEET: _____
 PROJ.: _____

**TOPEKA
 Public Works
 ENGINEERING**

620 SE MADISON ST. • 2nd Floor • TOPEKA, KS 66607
 Phone: (785) 368-3942 • Fax: (785) 368-3881

**CONCRETE PAVEMENT
 DETAILS**